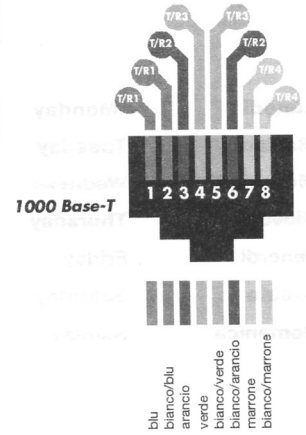
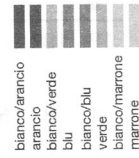
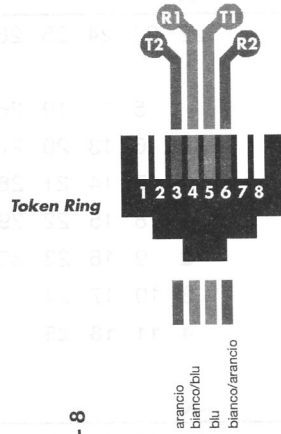
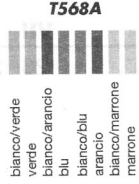
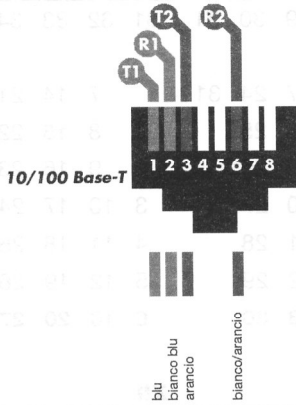
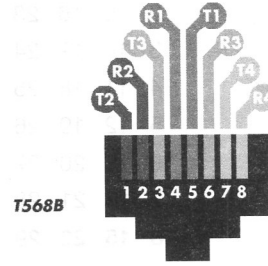
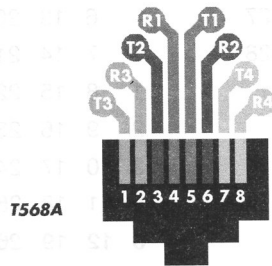


# Cablaggio Strutturato - Schema dei Pin



## Legenda

applicazione	Pins 1 - 2	Pins 3 - 6	Pins 4 - 5	Pins 7 - 8
Voce analogica	-	-	TX/RX	-
ISDN	Power	TX	RX	Power
10BASE-T	TX	RX	-	-
Token Ring	-	TX	RX	-
TP-PMD	TX	**	**	RX
ATM User device	TX	**	**	RX
ATM Hub	RX	**	**	TX
10BASE-T4	TX	RX	Bi*	Bi*
10BASE-TX	TX	RX	-	-
10BASE-VG	Bi*	Bi*	Bi*	Bi*

TX trasmissione  
 RX ricezione  
 Bi\* bidirezionale  
 \*\* terminazioni opzionali